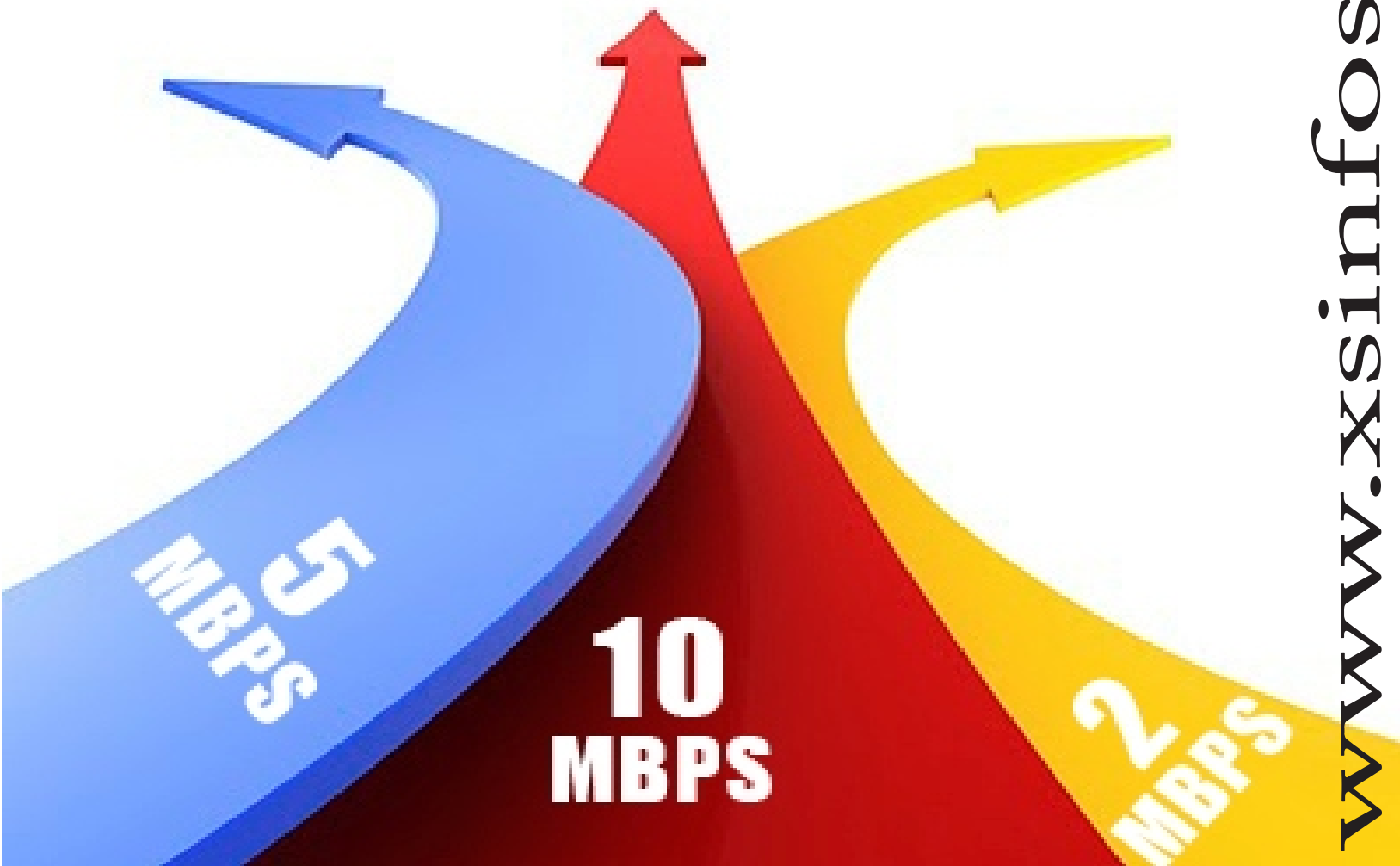


# Smart Guard

## XS Infosol Inc.



[www.xsinfosol.com](http://www.xsinfosol.com)

# Introduction



## Introduction

# Introduction

With the increased usage of Internet it is becoming extremely important to manage and secure your internet / network backbone. Also this is a new avenue for hospitality, telecom industries to add to their revenue stream.

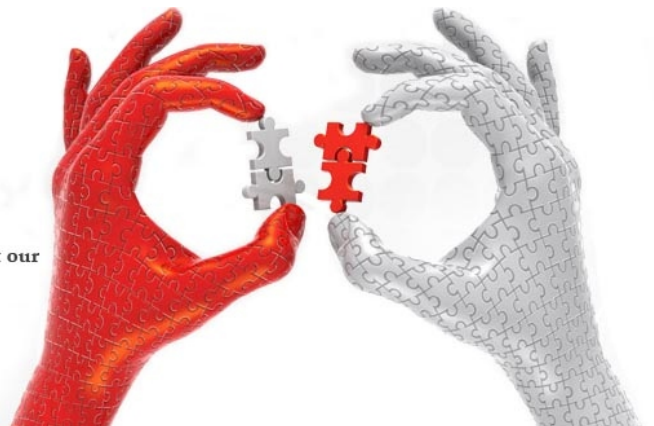
Smart guard provides simple yet effective solution for anyone wanting to manage and secure internet / network traffic. Its a multiple functional tool with a powerful features like advanced filter based bandwidth management, content filter, firewall virus scanner, anti spam engine, subscriber management system with the pre-paid coupons and post paid billing system. It also have build in server like VPN servers DHCP server & cache server.

With integration to payment gateways like Paypal & others it make the solution more effective(useful), robustness to the system is added by build in SMS & Email Alert functionality.

Smart guard is for any organization with more than 5 computer system. The software is already used by ISP's, Hotels, Hospitals, Initiatives, Corporates, SME's, Enterprises, Cafes, Hotspots & Internet Distributors.

### Aligning to **Customer** needs...

We make every attempt to completely understand the exact needs jof our customers. This ensures that our customers ultimately get what they are looking for.



## Benefits



# Benefits

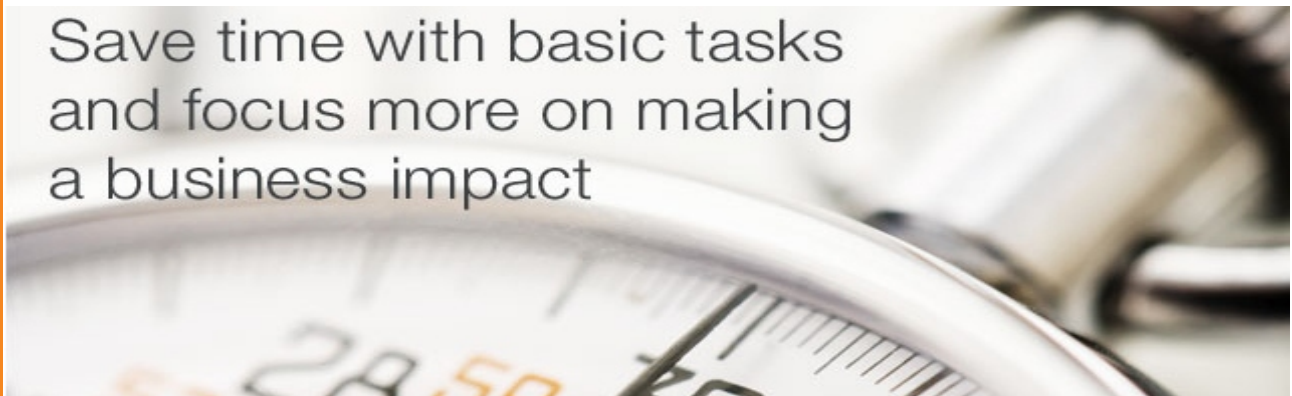
### Benefits

Bandwidth Manager is a converged Policy and Charging Rules Function (PCRF), GUI-based bandwidth management solution that integrates with your network to simply create bandwidth-related rules on a per service and per subscriber basis. It allows you to hyper-customize any type of mobile broadband service or offering to serve a diverse subscriber base.

Flexible and intelligent, Smart guard solution lets you:

- **Offer differentiated plan tiers.** Simply create and price various tiers of service, delivering differentiated quality levels and options.
- **Create service-based policies.** Establish policies to define services and control how bandwidth and access are managed for specific subscribers, plans, applications, products, time of day and more, based on various criteria.
- **Support any access type.** Utilize a converged, centralized bandwidth management policy solution across multiple access networks, such as 3G, 4G or DSL.
- **Guarantee quality.** Ensure that your subscribers get the level of service they need for bandwidth sensitive applications such as IPTV, VoIP and gaming.
- **Graphical user interface.** Easily create and define new service packages using intuitive on-screen tools to rapidly create rules and get new offerings to market quickly.

Save time with basic tasks  
and focus more on making  
a business impact



## Service Areas



### Service Areas

# Service Areas

#### University, School, Library

Educational institutions grants students and visitors limited access, usually monthly renewable and with daily limitations. Block access to adult websites and redirect them to restricted page, limit bandwidth per user, assign higher speeds to selected users, track usage logs and get real-time statistics.

#### Companies, Government

Reduce bandwidth requirements, log visited URLs, prevent personal Internet use during working hours by limiting access to YouTube, Facebook, and other websites you define. Allow Internet use for unknown users with limited rights, or grant Internet access only to known users in your network.

#### Apartment Blocks

Scalable from 1 room to 1 city, our software helps you easily implement bandwidth management without any client installations. Maintain user accounts, share Internet access, get statistics and usage reports, all within a single application. Build your WiFi and wired network with any hardware you already own.

#### ISP, WISP, Telecom

Internet service providers may easily control Internet use, create separate access rules for known and unknown users, share Internet connection, maintain users and get reports on usage, bandwidth, URL logs. It supports wired and wireless connections and is hardware independent.





## Service Areas



### Service Areas

#### Guest Internet Services

Whether it's a WiFi, wireless, wired, cable or satellite connection, our software takes care of the guest Internet control. It records every customer session time, IP, MAC, and URLs visited, and protects your business by preventing access to blacklisted sites.

#### Internet Cafe, Game Center

Reduces your overall bandwidth requirements and improves network efficiency. Integrates with Antamedia industry leading software for Internet Cafes: grants Internet use when a user login, and cuts connection after logout, saving bandwidth and money.

#### WE SPECIALISE IN SECURING NETWORKS OF

- ▶ ISP's WISP's, TELECOM Sectors
- ▶ Educational Universities, Colleges, Schools
- ▶ SME's & Corporate Sectors
- ▶ Hotels, Guest Houses & Hospitality Sectors
- ▶ Hotspot's WiFi Zones, Cyber Cafe's
- ▶ Finance & Medical Sectors
- ▶ Other Corporates & Companies



## Why Smart Guard



### Why Smart Guard

# Why Smart Guard

Consider Smart Guard Bandwidth Manager if you want to:

**Deliver the experience.**

Deliver the differentiated, personalized services that match your subscribers' lifestyle, desired service characteristics and budget, while ensuring consistent levels of quality for an unbeatable experience.

**Faster time to market.**

Define and develop new services quickly for fast time to market. Easily make and implement changes as needed to keep offerings current and profitable.

**Profitability.**

Enhance your mobile broadband offerings to deliver highly profitable services, attract subscribers and reduce churn. Optimize your available network bandwidth to save up to 25% in future capex expenditures.

**Bandwidth equals money.**

Bandwidth costs thousands of dollars a month, and anything you can do to lower your bandwidth consumption will save your money in the long run.



# Why Smart Guard



## Why Smart Guard

# Why Smart Guard

**Improved Internet experience:** Bandwidth management can make the difference between a network that's perceived as sluggish and unresponsive and one that seems fast and reliable. For delay-sensitive applications, such as Voice over IP, bandwidth management might make the difference between a device that works and one that's unusable.

**Fairness through compromise.** Someone accessing a low-bandwidth, text-based site shouldn't have to put up with a slow connection because someone else is downloading 5-GB movies onto their laptop. Going to the opposite extreme and blocking all video traffic or all file-sharing traffic is also unfair because it penalizes the moderate, occasional downloader as much as it hurts the patron downloading 50 albums every afternoon. Students often use BitTorrent or streaming video to access lectures and other files related to their classes. In other words, it's not always the particular protocol or application that's a problem; it's the few folks who use more than their share. Bandwidth management strikes a compromise. You can limit bandwidth usage on a per-user basis, a per-protocol basis or both. No single user or type of traffic can hog everything, but they won't be completely blocked either.

A man in a dark suit is pointing his right index finger towards a word cloud. The word cloud contains various business-related terms such as 'plan', 'ethic', 'growth', 'inspiration', 'product', 'service', 'focus', 'innovation', 'solution', 'teamwork', 'organization', 'customer', 'people', 'finance', 'investment', 'development', 'quality', 'partner', 'Management', 'process', 'business', 'goal', 'project', 'research', 'branding', 'leadership', 'mark', 'P&G', 'strategy', 'success', 'efficiency', 'production', 'mission', 'performance', 'creativity', 'accounting', 'network', 'achievement', 'revenue', 'reliability', 'cost', 'communication', 'technology', 'vision', and 'idea'.

### Why worked on unmanaged network ???

Just managed them in a prospective Manner - Secure you network with Smart Guard Network Manager..

**Get back to the faster & Secute track**

A hand is holding a cluster of blue hexagonal icons. Each icon contains a white symbol representing different network-related concepts: a laptop, a cloud, a server, a network switch, a smartphone, a document, a gear, and a lightbulb.

# Why Smart Guard ?



## Why Smart Guard ?

## WHY SMART GUARD ?

**Improved traffic prioritization:** Although it's hard to give one stream of patron traffic priority over another based on your own judgments regarding the appropriateness of the content, libraries often have valid reasons for giving some bandwidth preferential treatment. Certain voice and video applications simply won't function if they don't have reliable bandwidth and low latency. Also, you may decide that traffic from staff machines should have priority over patron traffic since your library depends on the effective, reliable transmission of catalog records and other files.

**Opportunities for remote and rural libraries:** Unfortunately, some parts of the country still don't have access to high-speed data lines, or the prices are prohibitive. In these cases, bandwidth management can make a big difference. Even if you don't have money to spend on a high-end commercial device, you can put some open-source software on a desktop computer with two network cards and use that as your Web caching server or your traffic-shaping server.





# Features at a Glance



## Features at a Glance

# Features at a Glance

### Bandwidth Management

- IP Based Traffic Management
- Time Based Traffic Management
- ACL Based Traffic Management
- Reseller Based Traffic Management
- ISP Based Traffic Management
- IP Pool Based Traffic Management (optional)
- Online user utilization graph & reports.

### Antivirus for Web Browsing scan virus & Anti Spam

- Based on gateway level
- Scanning on HTTP
- Detection should be relevant, continues & real time
- Detailed reporting
- Port Based Scan Virus

manage in the simpler way...



## Features at a Glance



### Features at a Glance

# Features at a Glance

#### Email Management

- POP3 :- Access Mail Server with almost any POP3 Client Software like Microsoft Outlook, Eudora etc
- SMTP :- Send Email with Advance Authentication with your Email Client
- IMAP4 :- Read or Send Emails via web interface from anywhere any Time
- Anti Spam :- Spam Protection for POP3/SMTP/IMAP4 Emails
- Anti Virus :- Virus Filtration for POP3/SMTP/IMAP4 Emails

#### Traffic /Network Monitoring

- Graphical Representation through Web Interface as well as shell prompt
- MRTG:- All Interface Traffic Graphs Generated with Traffic Management Server
- User Based Traffic Graphs
- Traffic View - Real Time Traffic Monitoring for All User

#### User Monitoring

- Check Transfer speed per User Based
- View Users Data Surfing almost live with web interface
- Check All User data transfer online with web interface.



## Features at a Glance



### Features at a Glance

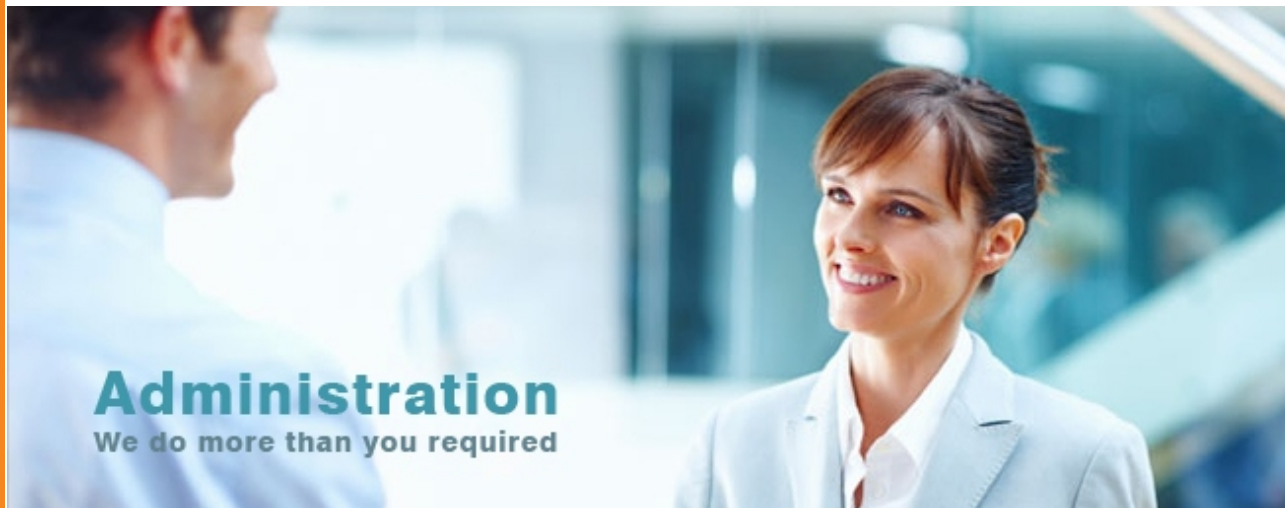
# Features at a Glance

#### Graphs

- LAN & WAN Graph
- User's Data Transferred Graphs
- Reseller Graphs
- CPU utilization Graphs & more

#### Administration

- Control and Manage Server by Web Interface
- Control and Manage Server by Remote SSH or Shell Prompt
- Multilevel Administration - Administrator, Manager, User Creator, Network Watcher (Optional )
- Users Connect and Authenticate User by IP/Mac Address Based
- Users Connect and Authenticate User by DHCP/PPPoE/RADIUS (Optional ISP Module Only)
- Create Invoices in Billing Module (Optional ISP Module Only)
- Online Support Center for advance Administration (Optional ISP Module Only)



# Features at a Glance



## Features at a Glance

# Features at a Glance

### Web Server

- Managed Server can save your IT cost.
- Fully Managed Server is a part of our software
- These server require little or no system admin skill
- Software come with per-hardened security software and per-loaded server software.
- DOS shields prevent our networks from Denial Of Service Attacks.

### MIS Reporting & Trend Analysis

- Web Site accessed by individual user / Group basis.
- Total Upload & Download date report based on user /group
- Bandwidth Graph based on daily,weekly,monthly,yearly
- Multiple Gateway load balancing graph.
- Trend Analysis Report on user to Internet usage
- Top 10 sites visited
- Top 10 sites Data transfer
- Top 10 sites type
- Category wise Reports & Analysis on user/group





## Features at a Glance



### Features at a Glance

# Features at a Glance

#### Database Storage Back-up & Restoration

- Based on Scheduling
- Data selection & download of database
- Database Service check & Repair
- Restoration & Configuration
- Auto FTP option

#### VPN Module

- PPTP VPN
- Remote Access to LAN
- Easy to Configure
- Faster than open VPN & SSL VPN

#### Security Scenarios

- Port Based Firewall
- IP Based Firewall
- Protects against Viruses
- IP/Port Forwarding
- QoS, ToS, VPN, PPPoE and AAA RADIUS Server (Optional ISP Module Only)
- Port Wise Authentication
- URL Flexibility
- Broadcasting Tracker



## Features at a Glance



### Features at a Glance

# Features at a Glance

#### Payment Gateway

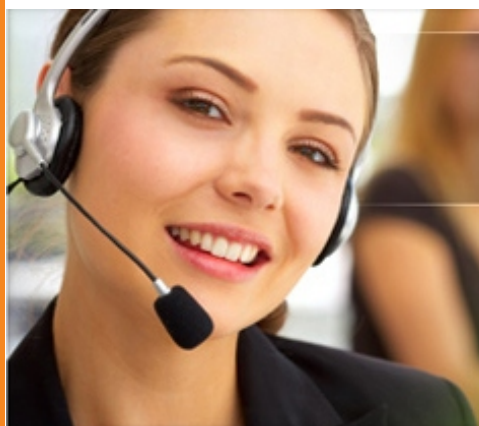
- Paypal Integration
- Merchant A/c Integration

#### Help-desk

- Auto user sync
- Automatic service application
- Profile update
- All live status visibility
- Easy to register online complaint
- Ticket wise status
- Escalation Matrix
- SMS acknowledgment
- Mail acknowledgment

#### Virus scanning

- Monitor suspicious content
- Scan overall database
- Alerts



Need **Help?**  
You've come to the right place.

## Features at a Glance



### Features at a Glance

# Features at a Glance

#### Billing

- Prepaid billing
- Postpaid billing
- Reseller account management
- Invoicing (user)
- Account statement
- Payment Receiving
- Debit Note management
- Credit Note management
- Reseller credit limit management

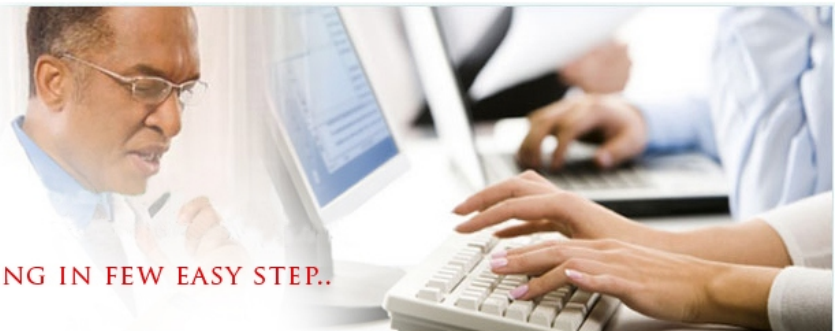
#### Back-up Module

- Manual backup
- FTP backup
- Module wise backup
- Backup retention
- Restoration

LET US DO WORK FOR YOU



BILLING IN FEW EASY STEP..





## Features at a Glance

### Features at a Glance

# Features at a Glance

#### Caching Module

- URL wise caching
- Caching reports
- Increase browsing experience

#### Content filtering

- URL wise blocking
- Group wise blocking
- Category wise blocking
- Keyword wise blocking
- Domain wise blocking
- Secure site (HTTPS) blocking
- Proxy sites blocking
- Real time 30,000,000+ web site database & URL's

**To store temporary files, like internet files.  
it is a special memory and fast and easy to access**





## Features at a Glance



### Features at a Glance

# Features at a Glance

#### SMS Gateway

- SMS integration
- Group wise configuration
- Alerts on SMS

#### API integration

- User creation
- User account Renewal
- User Management (Edit/activation/deactivation)

#### Reseller Management

- Account statement/reports
- Commissioning module
- Package creation
- Pre-Paid coupon management (PPC)
- User management portal



## Contact Us



H.O. - Noida: C-34, Sector-2 Noida - 201301 (U.P.)  
Web Site : [www.xsinfosol.com](http://www.xsinfosol.com), E-mail: [info@xsinfosol.com](mailto:info@xsinfosol.com)  
Voice :- Sales : +91-11- 9953007913 / 9953007923/ 9953007920,  
Support : +91-120-4978080

XS Infosol, The Invincible Technology :- Security Solutions - VoIP Solutions - IVR - Dialer - MailServer - Firewall - Bandwidth Management - Domain Registration - Web Hosting - Web Site Designing- Web Site Promotion.

### New Delhi

4th floor, Statesman House,  
Barakhamba Road, Connaught place,  
New Delhi - 110001  
Sales : +91-9953007913, 23, 20  
Support : +91-120-4978080,  
E-mail : [info@xsinfosol.com](mailto:info@xsinfosol.com)

### Punjab

Ankur Gupta,  
SCO 406, Mehak Tower,  
Kailash Cinema Chowk,  
Ludhiana- 141001  
Telephone: +91- 9915002192

### Mumbai

G-24, Gokuldharm Shopping Centre,  
Goregaon (East),  
Mumbai-400063  
Telephone : + 91-22-28403846, 28400223, 28408013

### U.S. Office

612 S HALLIDAY ST ANAHEIM CA 92804  
USA. Fax Number: 714-821-4089  
Cell Number: 949-579-0117

### UAE Office

PO Box No 38086, RAKFTZ, RAK, UAE  
Telephone: +971-56-350-6401, +971-50-656-4086  
Email: [uae@xsinfosol.com](mailto:uae@xsinfosol.com)